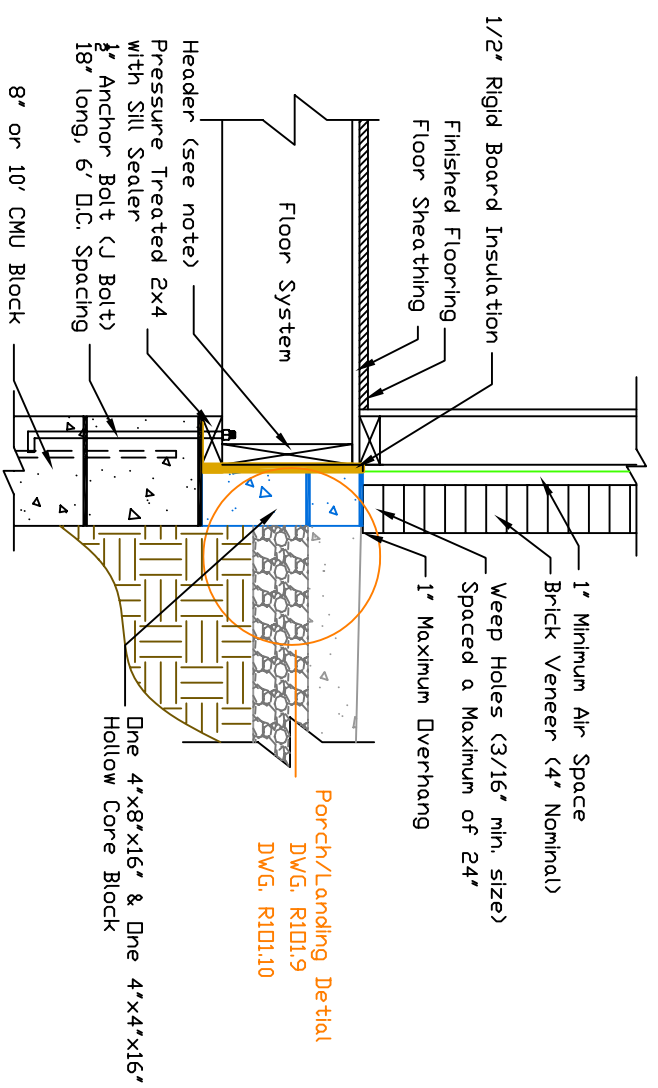
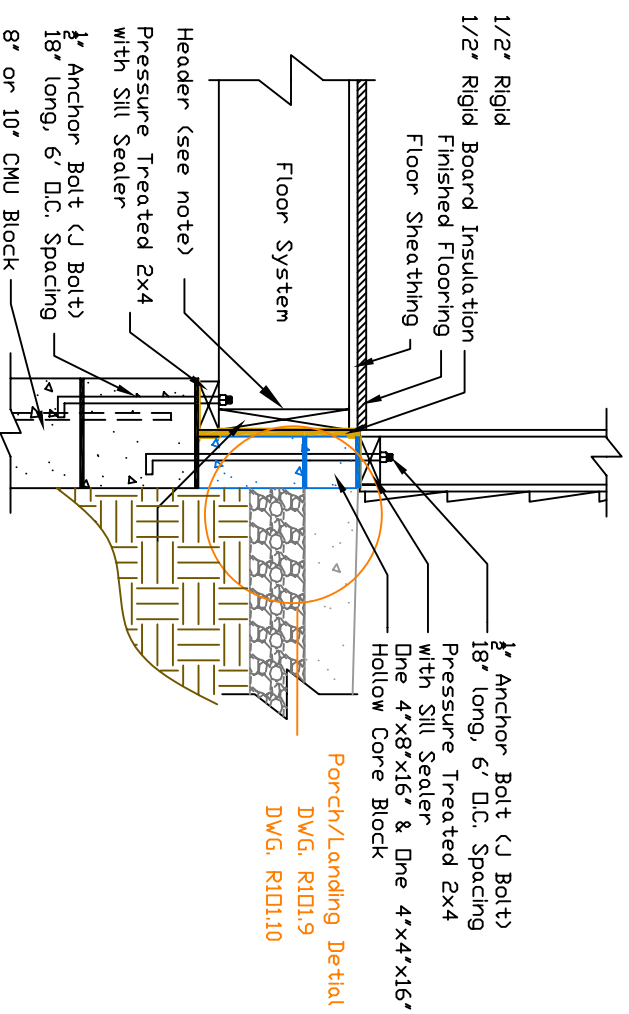


01 2x6 Framed Wall to CMU Foundation Connection Detail



03 2x4 Brick Veneer Wall to CMU Foundation Connection Detail



02 2x4 Framed Wall to CMU Foundation Connection Detail

Revisions:

3/24/04
4/1/04
4/11/04
4/14/04
4/28/04

- Notes:
1. All reinforcement bars as required by local building code (IRC 2003)
  2. Block size is based on local availability, if hollow core blocks are not available, solid block can be used by drilling to accommodate anchorage.
  3. Header location can be moved back from step foundation in accordance to local building code.
  4. It is highly recommended that J bolts are used in lue of strapping inorder to increase the strength of the step foundation.



PHRC: \_\_\_\_\_  
HYD/LIFT: \_\_\_\_\_

CMU Foundation Wall

Scale: 1" = 10'

Developed By: Fred W. Peters  
Drawn By: Fred W. Peters

R101.7-5/26/04