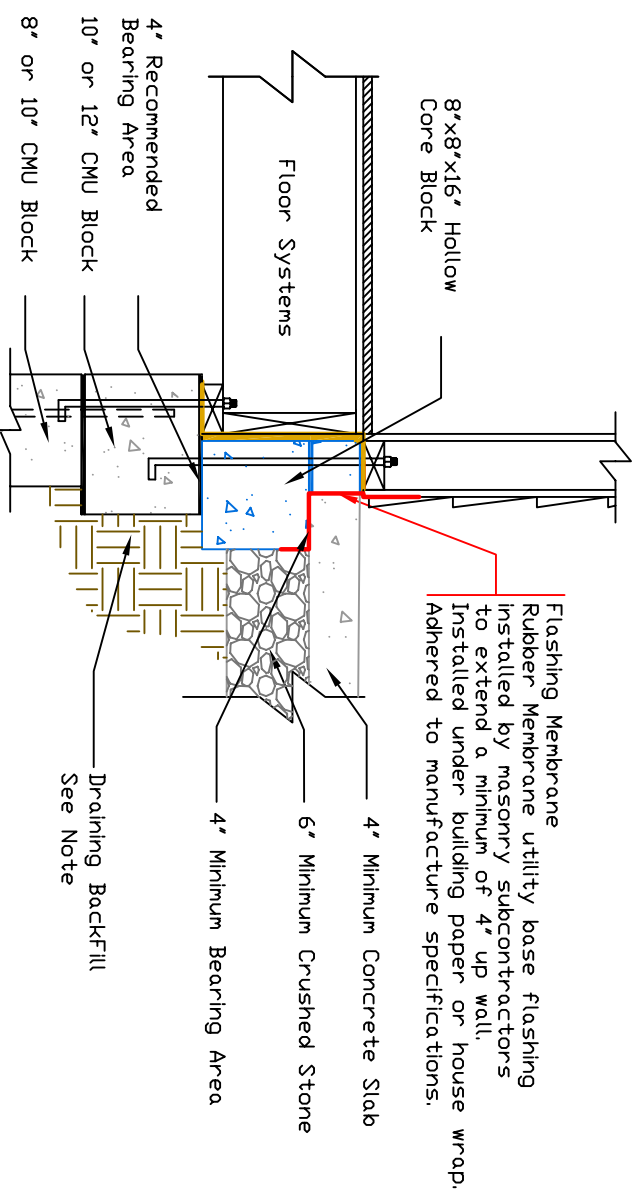


01 Porch Connection Detail 1



02 Porch Connection Detail 2

Revisions:
 3/24/04
 4/1/04
 4/11/04
 4/14/04
 4/28/04

Notes:
 1. Proper soil compaction is imperative to reducing settlement of porch and adjoining sidewalks. Approved compaction methods such as back filling in lifts utilizing proper compaction devices must be used.



Scale: 1" = 10'

Developed By: Fred W. Peters
 Drawn By: Fred W. Peters

PHRC: _____
 HYD/LIFT: _____

Porch/Landing Detail

R101.9-5/26/04