

Builder's logo



BUILDING SMART ENHANCES LUXURY

Building beautiful houses is our specialty.

Creating a home that not only perfects your dream, but also meets your needs now and in the future is our commitment.

When we build a new home, we believe that everyone should be welcome from babies in carriages to moms on crutches. Including VisitAble features is the smart choice. The comfortable choice. The lifestyle choice for today or tomorrow.

FEATURES DESIGNED FOR LUXURY AND EASE OF LIVING:

Easy-Care No-Step Entry

Our streamlined entry is attractive in appearance and a breeze to maintain. For ease and safety when laden with bundles, moving furniture, opening doors, welcoming guests or simply coming home, the advantages of no-step entries are numerous.



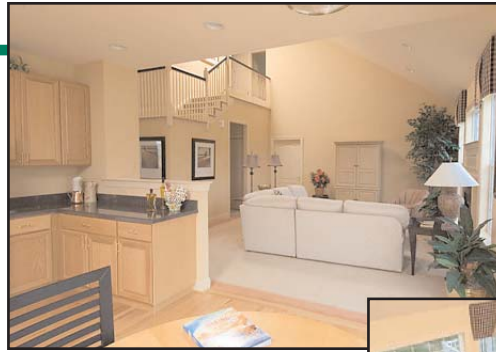
Expansive Doorways

Wider doorways exemplify elegance. Ease of entry is a bonus for everyone from homeowners to visitors.



Open Floorplan

Our distinctive open floorplan offers graceful gallery hallways and a traffic flow that is ideal for entertaining as well as easy living. The look is sophisticated, the style, a timeless statement of elegant convenience.



Spacious Baths and Powder Rooms

The main floor bath or powder room offers a creative opportunity with plenty of wall and floor space available for decorator accessories. Owners and visitors appreciate the luxury and comfort presented by this room's configuration.



We are proud to be in the vanguard of design-conscious builders providing excellence through careful planning. Our homes feature ease of use for all. The care taken in designing our homes will ensure a secure and comfortable lifestyle for you and your family. And – if you move or your needs change, you can expect a higher return on your investment when you sell your VisitAble home.

VisitAbility is an international movement promoting safety and flexibility through smart residential construction design. The Pennsylvania program is an offshoot of Concrete Change of Atlanta, Georgia, a residential accessibility initiative founded by Eleanor Smith in 1986. **VisitAbility** in Pennsylvania advances the initiative's ideas through coordination with builders, developers and buyers across the Commonwealth. Its objectives are to motivate and inform the residential building sector with a goal of providing VisitAble home features and options.

This project for **VisitAbility** in Pennsylvania, which is sponsored by the Pennsylvania Housing Finance Agency (PHFA), is administered by Life and Independence for Today (LIFT). Research for this project is provided by Pennsylvania State University's Pennsylvania Housing Research Center (PHRC).

For more information about **VisitAbility** in Pennsylvania, call

800.341.5438 (LIFT)

or visit its website at www.visitabilitypa.com



Life and Independence
for Today

